

# THE HANCOCK HERALD

Hancock Neighborhood Association



December 2014



## These Routes Need YOU!

There are no newsletter carriers for these routes:

- North of Hancock Center
- 45<sup>th</sup> from Duval to Red River

**Volunteer to deliver on your street today!**

Your neighbors will be so happy to see you as you enjoy a nice walk around the block once per quarter.

## INSIDE



### Hot Topics

HNA Votes Opposed to the Proposed Urban Rail

My I35 Meeting Report

**Code Enforcement Update**

The Talent



Neighbor In the Street

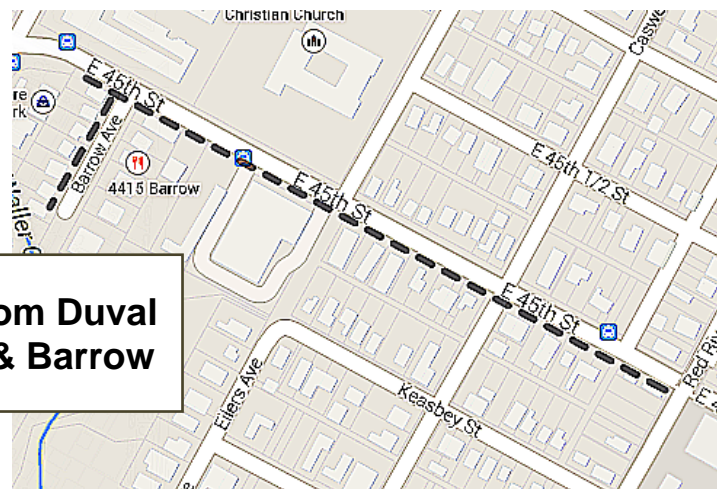


Contact the editor to help get these newsletters out:

dcarleenedgar@yahoo.com



**43rd to 45th,  
between Red  
River & IH35**



**45th from Duval  
to RR & Barrow**

# HOT TOPICS

## HNA Votes Opposed to the Proposed Urban Rail

Reprinted from an email posted to the HNA Yahoo newsgroup on October 9, 2014 by Carolyn Palaima

The Hancock Neighborhood Association (HNA) at a Special Meeting held on October 8, 2014, voted overwhelmingly that:

The Hancock Neighborhood Association is opposed to the proposed urban rail.

Prior to the Special Meeting the HNA had invited speakers from both Project Connect and TxDot to present at its regular July meeting. This was followed by designation of an HNA Urban Rail Working Group comprising the HNA Executive Committee, HNA Parks and Green Spaces Committee, and Chair of HNA Transportation Committee, who met with Kyle Keahey, Project Connect, and Mike Trimble, City of Austin Capital Projects Office, on September 11, 2014, to gather information on design aspects of the rail coming through Hancock neighborhood starting from its boundary at 45th Street to the proposed station at Hancock Center and down Red River Street. A report of findings from this meeting, supporting documents and links to relevant sites are posted to the HNA website at:

<https://www.hancockna.org/www/content/hna-urban-rail-working-group-report>. At the regular HNA meeting in September these findings were reported to the membership for discussion and a vote was taken to hold a Special Meeting for HNA to take a position on the proposed Central Corridor urban rail. It is from an informed perspective with full consideration given to the impact on the integrity and quality of the Hancock Neighborhood that the membership puts forward these reasons for its opposition to the proposed urban rail:

**Continued on next page**



## My I35 Meeting Report

**Jim Rankin, HNA Transportation Committee Member attended the 10/29/14 TXDOT Neighborhood Rep Meeting for the latest on IH-35 Improvement Design for the segment between US290 and 11<sup>th</sup> St.**

Go to [www.mobility35.org](http://www.mobility35.org) for the latest Improvement Design (and a virtual drone-view and drive-through the future 51<sup>st</sup> St Roundabout) which is still being tweaked and the Diverging Diamond at Airport/IH-35 Intersection video is on the website now also.

There are no IH-35 on-ramps between UT's Disch Faulk Baseball Field (one to upper deck from MLK) and Airport and only a few off-ramps.

TXDOT has incorporated many NA suggestions and comments from two previous meetings:

- Good bike/pedestrian crossings at 51<sup>st</sup> roundabout and at all new replacement bridges over lower deck. Bridges have U-turn lanes both ways without stopping.
- The offset E. 32<sup>nd</sup> streets on either side of IH-35 have their own bridges which will have coordinated signals.
- A few IH-35 crossing bridges will have No Left Turn from the access road at certain times of rush hour to keep the traffic flowing.
- Northbound Access Road from MLK does have an on-ramp to IH-35 upper deck.
- Property takings and sound barrier and landscaping details TBD at northbound off-ramp just N. of 32<sup>nd</sup> St.
- Lower deck lanes will be 11'-wide, with two FTC (Future Transportation Corridor) lanes in center and 2' shoulder against retaining walls and TXDOT's current thought is to make them into Variable Toll Lanes just like the two new Variable Toll Lanes on MOPAC. There will be minimal entry/exits from those Toll Lanes and City Busses/Emergency Vehicles will not be charged.
- There will be no direct left turn onto Westbound 45<sup>th</sup> from Northbound Airport, but a further Northbound U-turn and return South will get you to 45<sup>th</sup> Westbound with a right turn.
- Southbound Airport will still have a Southbound upper deck on-ramp, but it will have the same short merge distance and will probably be a metered entry.
- TXDOT has been coordinating over the past two years with the Texas Government Complex, UT & its future Medical School, and adjacent hospitals to accommodate their transportation needs in the Improvement Design.
- TXDOT acknowledged their signage efforts in this segment to date have been lackluster, but will make special efforts for improved signage.

PUT YOUR  
HANDS UP  
MAKE FM  
TOUCH

**Thank you to our  
new newsletter  
carriers!**

Mary Sanger  
Merianne Gaston  
Susan Young

**caleb, classically trained  
shortcut, \$24**



s. lamar e. 6th s. congress burnet e. 41st slaughter birdsbarbershop.com

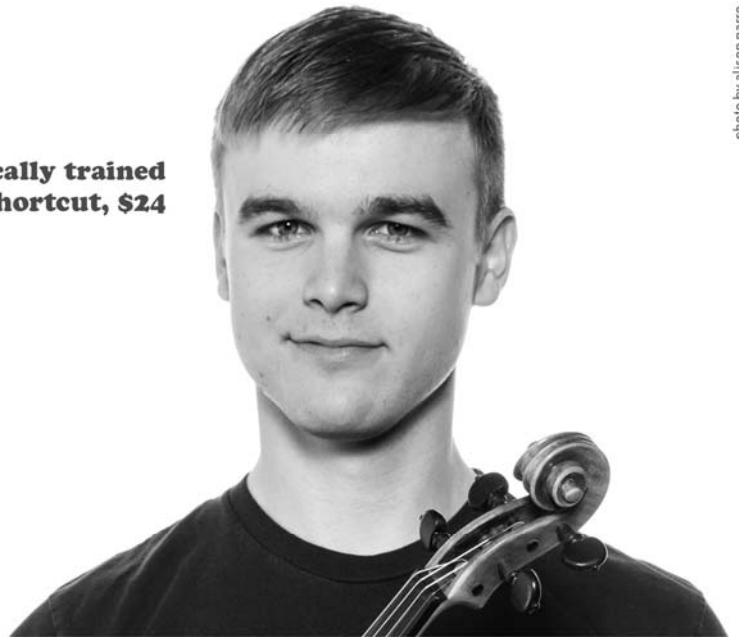


photo by alison narro

## **HNA Vote on Urban Rail Continued from previous page**

### Land Use

- Light rail needs to work well with land use. The City has engaged in advance with development planning along Airport Blvd and in Mueller, however the route along Red River was decided without engaging the Hancock neighborhood on potential development along our segment of the route and anticipated impacts.
- Historically, property fronting rail lines turns commercial and/or suffers degradation of single-family residences along the route.
- Nothing in preliminary planning about what happens to side streets onto Red River, such as need for guardrails or entering into either lanes of traffic flow.
- Hancock Center as a station would increase pressure for high-density development and increase traffic flow in the area.

### Costs

- The high cost of the urban rail project adds pressure to

increase the tax base along the route leading to commercial and/or high-density development eroding the character of the neighborhood.

- The impacts of the proposed first line are uncertain, but the need to come back to Austin citizens for additional moneys to build out the rest of the rail is certain. Ties up Austin's bonding capacity.
- Having light rail and highway improvements jointly under Proposition 1 does not allow for a clean vote on either separately.

### Process

- Too much money with too much uncertainty at a time when Austin will be working through decision-making processes with the new City Council single-member district system.
- Decision on bus rapid transit supported with federal funds on Lamar/Guadalupe limited options for light rail route.
- Can anticipate that Hancock neighborhood concerns will be secondary to any requirements for qualifying for federal transit funds and City of Austin incentives to densify the central core.



# CODE ENFORCEMENT

**This email was posted to the NUNA newsgroup by a resident on November 4<sup>th</sup>, 2014 (it's a forwarded email):**

Hello, I'm officer Adair #1361 with APD/Special Events/Sound Enforcement. I thought that I would send you an email regarding ACL 2014.

I took four pages of readings from the neighborhoods closest to Zilker Park from both sides of Lady Bird Lake and as far away as the 2700 block of Greenlawn Parkway (North Cross Mall area). I also took at least two readings per day from the 3700 block of Duval.

The measurements were taken with two different sound meters that were calibrated before and after the readings.

I did not get any readings over 80 dB/A. City ordinance allows up to a decibel limit of 85 dB/A.

Amplification technology now allows for a much heavier bass in music (measured as "C weighting") even though the human range of hearing (measured as "A weighting") is rather low. C weighted sound waves are responsible for the thumping, window rattling effect that you may have experienced from the music. C weighted sound waves travel much farther than A weighted waves (think of water waves) and can bounce over a residence, hit low cloud cover and bounce back to earth. The city ordinance currently only allows me to regulate A weighting. A weighting is the industry standard that most accurately resembles human hearing. You may already know that the city's Music Office is working with City Counsel to allow for the

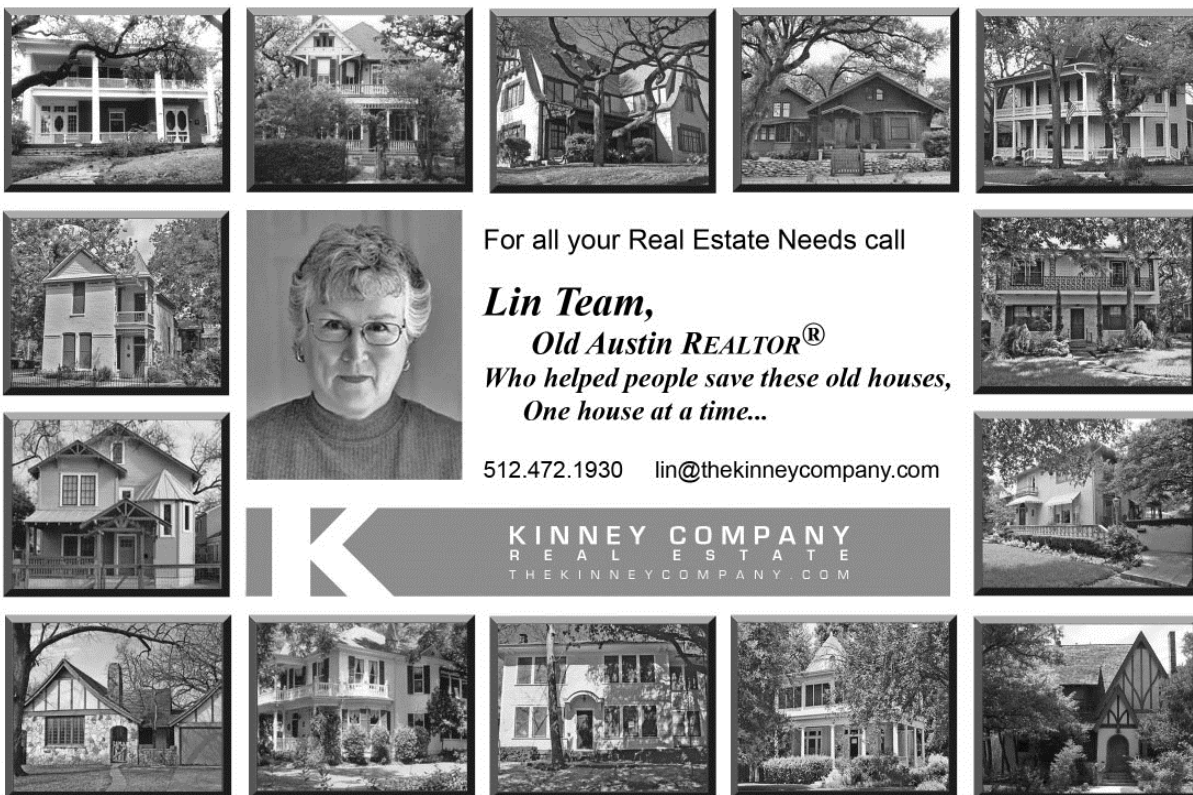
regulation of C weighing. Until C weighted measurements can be regulated through city code/ordinance that aspect of the music that you hear during concert type events, at your residence, in all likelihood will remain as they are now. If you have technical or legal questions regarding sound and sound measurements please contact the city's music office. If you have enforcement questions please don't hesitate to contact me. Thank you.

Joseph Scott Adair #1361  
Senior Patrol Officer  
Austin Police Department  
Special Events/ Sound Enforcement  
Office 512)974-4944([joseph.adair@austintexas.gov](mailto:joseph.adair@austintexas.gov))  
email: [joseph.adair@austintexas.gov](mailto:joseph.adair@austintexas.gov)



Award Winning Architecture,  
Construction, & Outdoor Spaces

[www.CGSDb.com](http://www.CGSDb.com) • 512.444.1580



For all your Real Estate Needs call

***Lin Team,***  
***Old Austin REALTOR®***  
*Who helped people save these old houses,  
 One house at a time...*

512.472.1930    lin@thekinneycompany.com

**KINNEY COMPANY**  
 REAL ESTATE  
 THEKINNEYCOMPANY.COM

# Garden Notes



## December-January

- Stockpile leaves to use in compost and mulch through spring and summer.
- Move or introduce robust seedlings outdoors.
- Prepare soil-add compost, deep till, soil test to determine any other needed ingredients.
- Clear out expired plants.
- Water everything well before a freeze.

## Water before a freeze

A moist soil can hold four times more heat than a dry soil. It will also conduct heat to the soil surface faster than a dry soil, aiding in frost prevention. In a study performed years ago, the air temperature above a wet soil was 5 degrees F higher than that above a dry soil and the difference was maintained until 6am the next morning.<sup>1</sup>

1.Cornell Cooperative Extension, Understanding Frost [www.gardening.cornell.edu/weather/frost.pdf](http://www.gardening.cornell.edu/weather/frost.pdf)

# THE TALENT

## Fade Away

By Anonymous 10<sup>th</sup> grader  
Based on a true story

One cold night, I stared out the frosted window, looking out on the dark night. I waited patiently, then was called into the back room. I routinely let my fingers run their course on a track I had played hundreds of times before. The notes swirled up and down, but seemed dull to me, for I had heard the same melody come from the instrument many times. I heard every careless mistake and mentally pinched myself for each one. But then I stopped. My teacher and I looked at each other, with identical faces of horror and concern. Through the droning of cars passing by, and the sharp notes that poured from the piano, we heard a wail. That one moment when I stopped playing lasted forever, my mind going a million miles an hour, and it seemed like time couldn't keep up. I don't remember running to the door to find the voice, only scrambling to turn the doorknob frantically. Dashing out into the night, I didn't feel the record-breaking cold seep into my clothes that newscasters talked about all day. I felt nothing but the anger for whomever caused the moaning call. The young girl called again, "Help me!"

Adrenaline coursed through me as I searched the night for any sign of her. My eyes latched onto a nearby man jogging in the same direction as the girl's voice. In my mind I had no question that this man, had to be, there could be no other possibility but the fact that he was her attacker, he made her scream. Driven by the anger boiling up in my chest, I took a step towards him, fully intending to... who knows what? Who cares? He was an evil human being and I had taken self-defense, so there was no reason why I should not confront him.

As I started towards him, my teacher yanked me back and sat me down inside, while she marched out to confront him herself, her skinny frame shaking in the cold. I waited. And waited. And waited. Even with my nose pressed firmly to the glass it was too late to see her in the night. Finally she stepped towards the locked door and I let her in, dying to know what happened. She told us that he claimed to try to help her. Unlikely. We sat and waited while she described him to the 911 operator and told them of the girl's shrieking.

Continued on next page

## Please and Thank You

Please and Thank You, in my estimation  
are fundamental principles of civilization

When I ask for something and I say please  
metaphorically speaking, I'm on bended knee

And when it's granted, it's my contention  
that a word of thanks is the right convention

Younger generations, I suspect  
don't understand that it shows respect

So please take heed:  
if you don't say thank you  
I'll put you over my knee and spank you

by Tony Beckwith  
Carolyn Avenue  
tonv@tonvbeckwith.com



**Start the year off right with  
healthy meals from Subway!**

**Whether feeding your family or a group talk to  
us about your catering needs!**

Come visit one of our convenient locations:

5419 IH 35 N., Austin, TX 78723, 512-467-9536  
3909 IH 35 N., Austin, TX 78722, 512-323-9559  
1801 E. 51st Street, Austin, TX 78723, 512-472-7282





## Your Neighborhood Specialist

**realty/austin**  
make the move™



### 4517 AVENUE G | OFFERED AT \$949,000

3 BED | 2.5 BATH | STUDY | .30 ACRES | +/- 3070 SQFT

Modern, practical layout and space considerations for entertaining and living including spacious living room with high ceilings, wide open custom kitchen with storage, utility room with utility sink, bonus "flex-creative space", master suite downstairs. A rare find in Hyde Park and magical place to call home!



### 5104 EILERS AVE | OFFERED AT \$329,000

2 BED | 1 BATH | .14 ACRES | +/- 1140 SQFT

Quintessential 1950s bungalow located just north of Hyde Park on a quiet residential street. Features original wood floors, light & bright w/ fresh exterior & interior paint. Expanded kitchen w/ large dining area, custom cabinetry & stainless gas range. Large utility room as well as detached garage.

## I live here, I work here

When it's time to choose a Realtor®, choose a true neighborhood expert. I provide exemplary customer service along with innovative marketing strategies and accurate, in-depth knowledge of our neighborhood and its unique homes.

Whether you are buying, selling, or investing, contact me today for a complimentary consultation.

## TAMMY YOUNG

Broker Associate, GRI

Hyde Park Neighbor

512.695.6940

tammy@realtyaustin.com

tammyyoung.com



Call **512.695.6940** for all of your real estate needs.

## Fade Away

### Cont'd from previous page

I don't know what happened to the girl. I have waited and waited for days and nothing arises. I fear that I will never know, that she will just fade away from my memory, and that I won't remember the desperate feeling in my chest as I waited. We forget little things all the time, like what we were doing, where we put something, or someone's name. It seems so strange to think of forgetting an experience that shook me like this one, but I know the image of my frail teacher putting herself in front of me, and the feeling of sheer anger mixed with fear that drove me so crazy will fade away one day. Like the police report falling down under countless others in a tumbling tower of papers that I will never be able to read, it will disappear without a care, never to be seen again.

#### Editor's update:

It was revealed via the Windsor Park neighborhood email group that the woman was waiting for a bus when a car full of men pulled up and, brandishing a gun, demanded her purse. She fled, screaming and the car left the scene.

This student is a 12 year Hancock resident and attends LASA High School

PUT YOUR  
HANDS UP  
MAKE EM'  
TOUCH

Thanks December Waller Creek Clean-up Crew

### Humans

Tom Carlisle  
Andy, Ben, & Jody Couch  
Coan & Jen Dillahunt  
Chris & Liam Doran  
Ron & Alexia Heinrich  
Patricia & Anna Thomas

**Special thanks to leader**  
Kathleen Strong

### Canines

Mallory  
Little black dog

### Felines:

No felines chose  
to participate.

# NEIGHBOR IN THE STREET

When neighbors meet in the street, fascinating tidbits can be revealed. The next time you run into someone in Hancock, ask them a few questions, take a pic with your phone, and send it (with permission) to the editor at dcarleenedgar@yahoo.com



## Carol Moczygemba

**How long have you lived here?**

I lived here from 1973 to 1986, then I moved to Wisconsin and later to Missouri. I returned to Austin and the Hancock neighborhood in 2001 with my husband, Mike Hirsch.



Carol Moczygemba, long time HNA resident.

**What brought you to the neighborhood?**

At the time it was affordable for a young family with one employed adult to buy a home in this area. Friends already lived on Harris Park, I was a recent grad of UT, and I had lived on Avenue G as a student. That made this neighborhood feel like home.

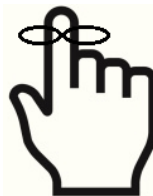
**Who are some of your friends in the neighborhood, and how did you meet?**

One dear friend, whom I've known since 1985, moved into the neighborhood, just down the block, while this house was a rental and I didn't have any idea I'd ever live here again. When I returned, it was a great comfort—and lots of fun—to have her only two houses away. When I joined the HNA, I met several people who have become friends. A number of neighbors who were friends and acquaintances when I lived here the first time around are still here! This is truly home.

**What do you value most in this neighborhood?**

Many things. I certainly value the people. So many eclectic personalities have shared and taught me so much — and all are these remarkable, friendly, and generous people are within walking distance.

**Continued on next page**



## *Important Dates*

### **2014 Parking Permits Expire**

**New Year's Eve at 11:59:59**

Contact the neighborhood coordinator  
for your block.

### **HNA regular meeting**

**January 21, 2015  
7pm – 8:30pm  
Hancock Rec Center**

### **HNA will take nominations & VOTE for Officers**

#### **Current nominations:**

President – Mark Harkrider  
Vice President – James Harkrider  
Secretary – Mary Sanger  
Treasurer - Bruce Fairchild



## Neighbor Carol Moczygemba Continued from previous page

I can walk to the gym, grocery store, a hospital, events at the university, the pool, a great bakery and gathering place, a restaurant we call our alternate dining room, the post office, and to neighborhood meetings at Hancock Rec Center.

I value all the things you can learn at the Rec Center and golf course. There are a variety of classes and activities, or we can just sit at a picnic table under a big oak tree. This neighborhood is one of the few in Austin that still feels like a place where you can sit on your front porch on a sunny day, strum your guitar and sing to yourself — and nobody thinks you're weird.

### **What is an Austin-y memory that you will always remember?**

Sunday morning breakfast picnics on the Capitol grounds,

### **When have you felt most connected to your neighbors?**

During the times when we worked together to preserve the integrity of our neighborhood.

### **When have you felt a sense of loss or longing in the neighborhood?**

Every time an old house gets razed and replaced with a new, much bigger one.

### **What is a question you have about something in the neighborhood that you've never been able to answer?**

I would like to have a good explanation for why the city doesn't allocate enough funding to fix our uneven and broken sidewalks when we're constantly hearing about the increased tax base coming from all the new development, and the prosperity rampant in Austin.

### **Do you have a dream in life that you haven't been able to achieve yet? Do you think you will, and if so how?**

I have a dream to star in a comedy production at Zachary Scott. I haven't achieved it for a number of reasons, foremost being I never tried. Do I think I will? Who can say? Life certainly has lots of surprises.





High Tech - Soft Touch Dentistry  
**Francys Day D.D.S**

---

**COMPLIMENTARY WHITENING KIT**  
upon completion of your new patient exam and cleaning  
Expires: 5 / 31 / 14

---

1301 W 38th St, Suite 708 · Austin, TX 78705  
(Located in Medical Park Tower, next to Seton Shoal Creek Hospital)

**512 . 452 . 4495**

SMILE MAKEOVERS  
DENTAL IMPLANTS  
ORAL SEDATION  
PORCELAIN VENEERS  
CROWNS AND BRIDGES  
TOOTH-COLORED FILLINGS



[www.austinsmilesbyday.com](http://www.austinsmilesbyday.com)

## HNA Officers:

**President:** Carolyn Palaima

**Vice President:** Mark Harkrider

**Treasurer:** Bruce Fairchild

**Secretary:** Vacant Position

**Historian:** Vacant Position

Newsletter Editor: Carleen Edgar  
[dcarleenedgar@yahoo.com](mailto:dcarleenedgar@yahoo.com)

Newsletter Ads: Kathleen Strong  
[ads@hancockna.org](mailto:ads@hancockna.org)



## Lee Elementary 75<sup>th</sup> Anniversary Celebration October 2, 2014

Lee Elementary, serving kindergarten through 6<sup>th</sup> grade students from the Hyde Park, Hancock, North University and Eastwood neighborhoods, celebrated its 75<sup>th</sup> anniversary on the Lee campus on October 2. With an attendance of about 600 current, former, and future Lee students, families, and staff, the celebration was a resounding success.

During the two hour event, alumni from the 1940s up through the 2010s roamed Lee's hallways, checking out old classrooms and viewing yearbooks and artifacts from each decade. Visitors could also view art work from current students that depicted important people and events over the past 75 years. Outside, under the Live Oaks, current Lee Parents and Texas Musicians, Bruce Robison and Hayes Carll, played a small concert as people of all ages gathered, reconnected, and reminisced about their time at Lee. Local food trucks sold food and visitors were treated to a Lee-themed anniversary cake by Lee parent Paloma Efron of *Coco Paloma Desserts*, French macaroons by Lee parent Tracey Cole of *Cookie Peace*, and dark chocolate truffle lollipops by Lee parent Steve Lawrence of the *Chocolate Makers Studio*.

Current Lee principal John Hewlett, PTA President Kim



Brackin, past president of the Lee PTA and Austin Mayor Pro Tem Sheryl Cole, and former Lee principal Mary Lou Clayton, who served Lee for 22 years, spoke at the event and talk about what makes Lee a special place.

Robert E. Lee was built in 1939 among large, old Live Oak trees on Waller Creek, three blocks north of the University of Texas campus. The first students attended Lee in September of 1939. It was the first AISD School fueled by natural gas instead of coal.

**Shannon Cavanagh, Ph.D.** Associate Professor Department of Sociology & Population Research Center University of Texas at Austin



PUT YOUR  
HANDS UP  
MAKE EM'  
TOUCH

**Thank you to this issue's contributors:**

Carolyn Palaima  
Officer Adair  
Jim Rankin  
Anonymous Teen

Shannon Cavanagh  
Carol Moczygemba  
Kathleen Strong